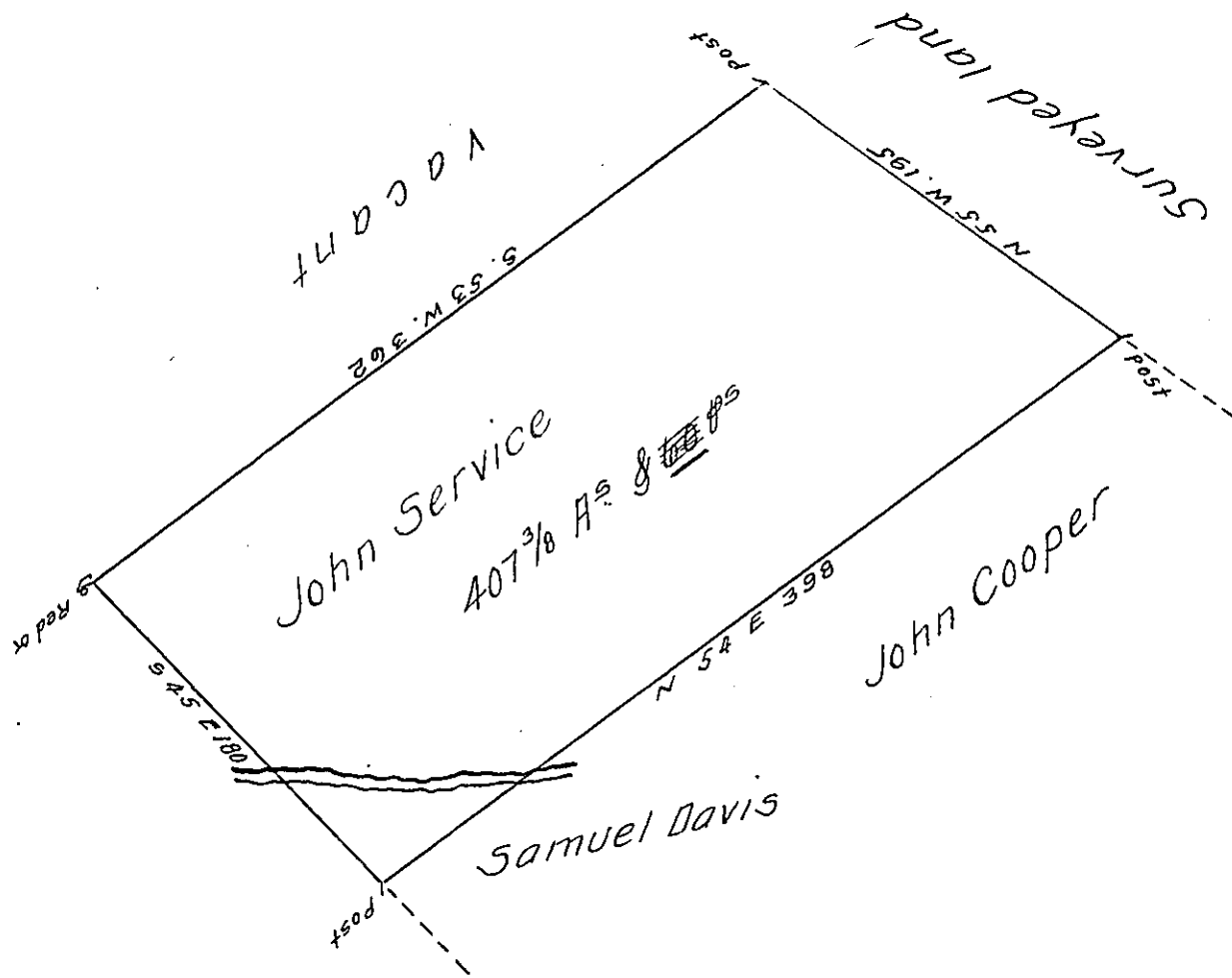


P-6-243



*Draught of a Tract of Land situate on the Waters of Beaver Creek in the County of Bedford. Containing four hundred and Seven Acres & 60 ps & the Usual Allowance of Six p<sup>t</sup> Cent for Roads &c. Surveyed for John Service November 12<sup>th</sup> 1785. In Pursuance of a Warrant Dated April the 1<sup>st</sup> 1785.*

*George Woods D.S.*

*To John Lukens Esq<sup>r</sup> S.G.*

*IN TESTIMONY that the above is a copy of the original remaining on file in the Department of Internal Affairs of Pennsylvania, made conformably to an Act of Assembly approved the 16th day of February, 1833, I have hereunto set my Hand and caused the Seal of said Department to be affixed at Harrisburg, this twenty ninth day of September 1910.*

*Henry Howell*  
 Secretary of Internal Affairs.